



SAMPSON COUNTY 911 & ES FACILITIES

CLINTON,
NORTH CAROLINA

CONSTRUCTION
DOCUMENTS

SECTION DETAILS

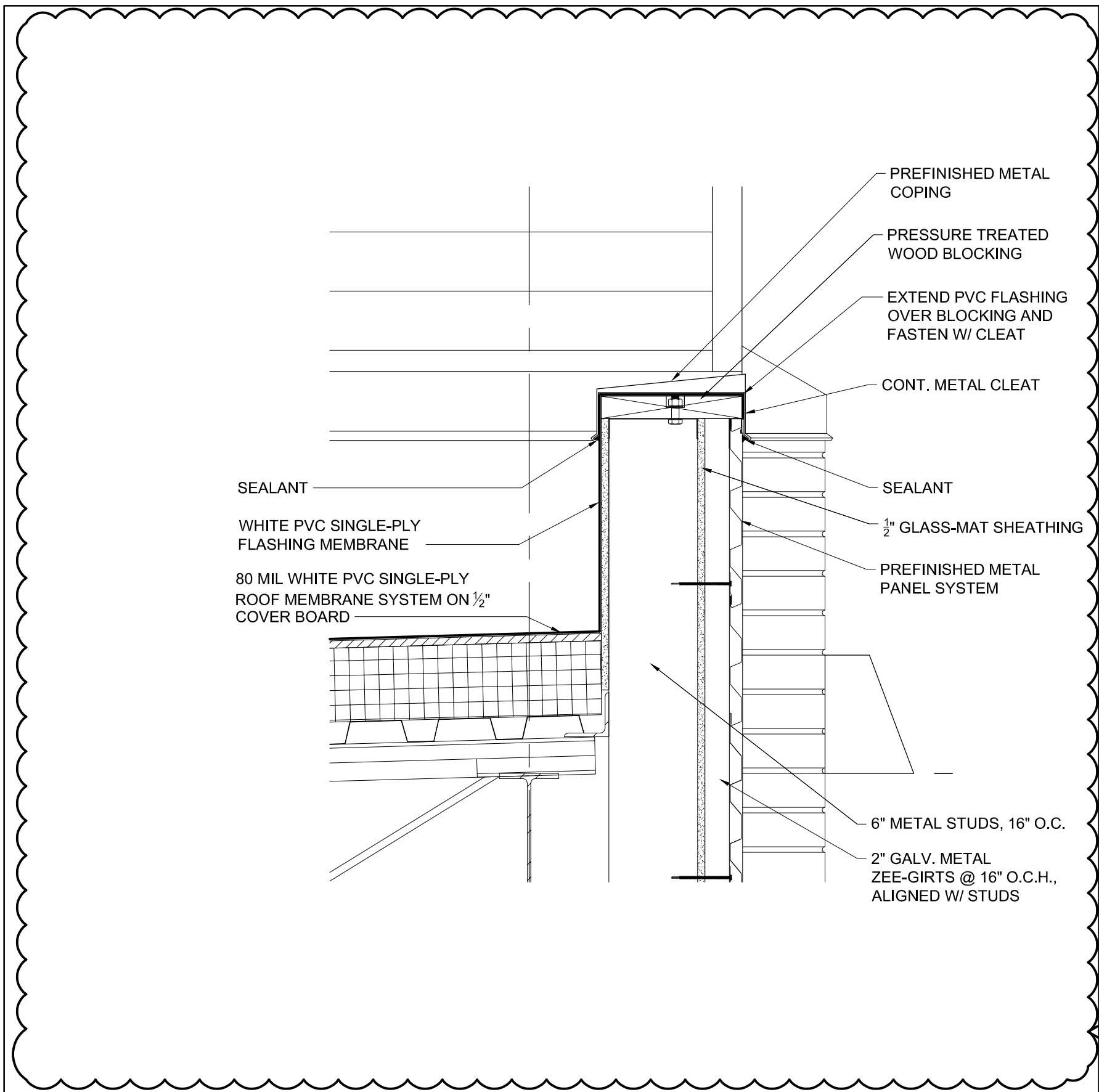
DATE	12.04.2020	
PROJECT NO	20003	
REVISIONS		
NUM.	DATE	DESCRIPTION:
REV1	12/17/20	REVISION 01

THIS DRAWING IS THE PROPERTY OF ADW ARCHITECTS, P.A. AND
SHALL NOT BE REPRODUCED OR COPIED IN WHOLE OR IN PART. IT
SHALL NOT BE USED ON ANY OTHER PROJECT OR GIVEN TO ANY
OTHER COMPANY OR AGENCY WITHOUT THE CONSENT OF ADW
ARCHITECTS, P.A.

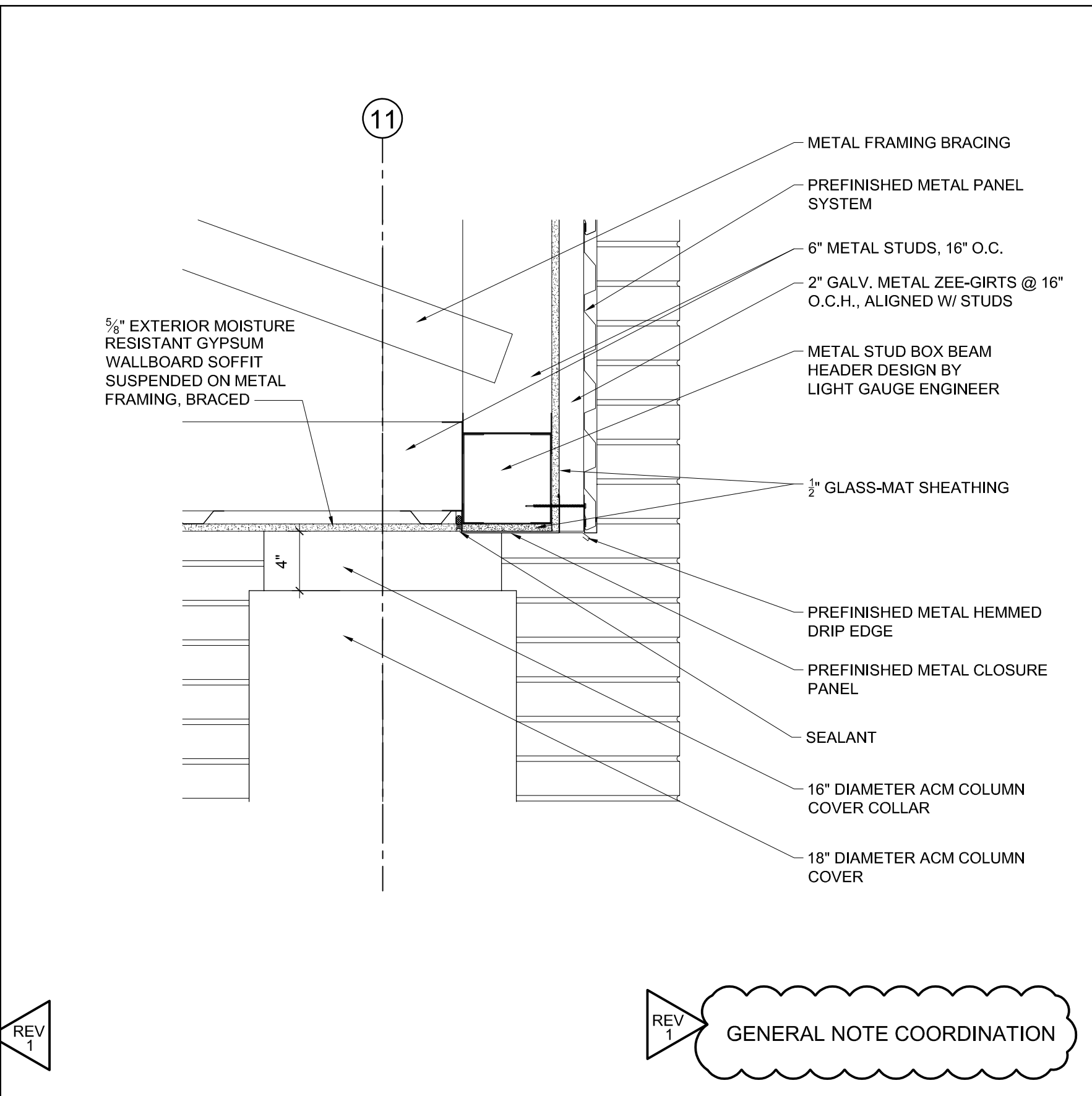


SHEET NUMBER

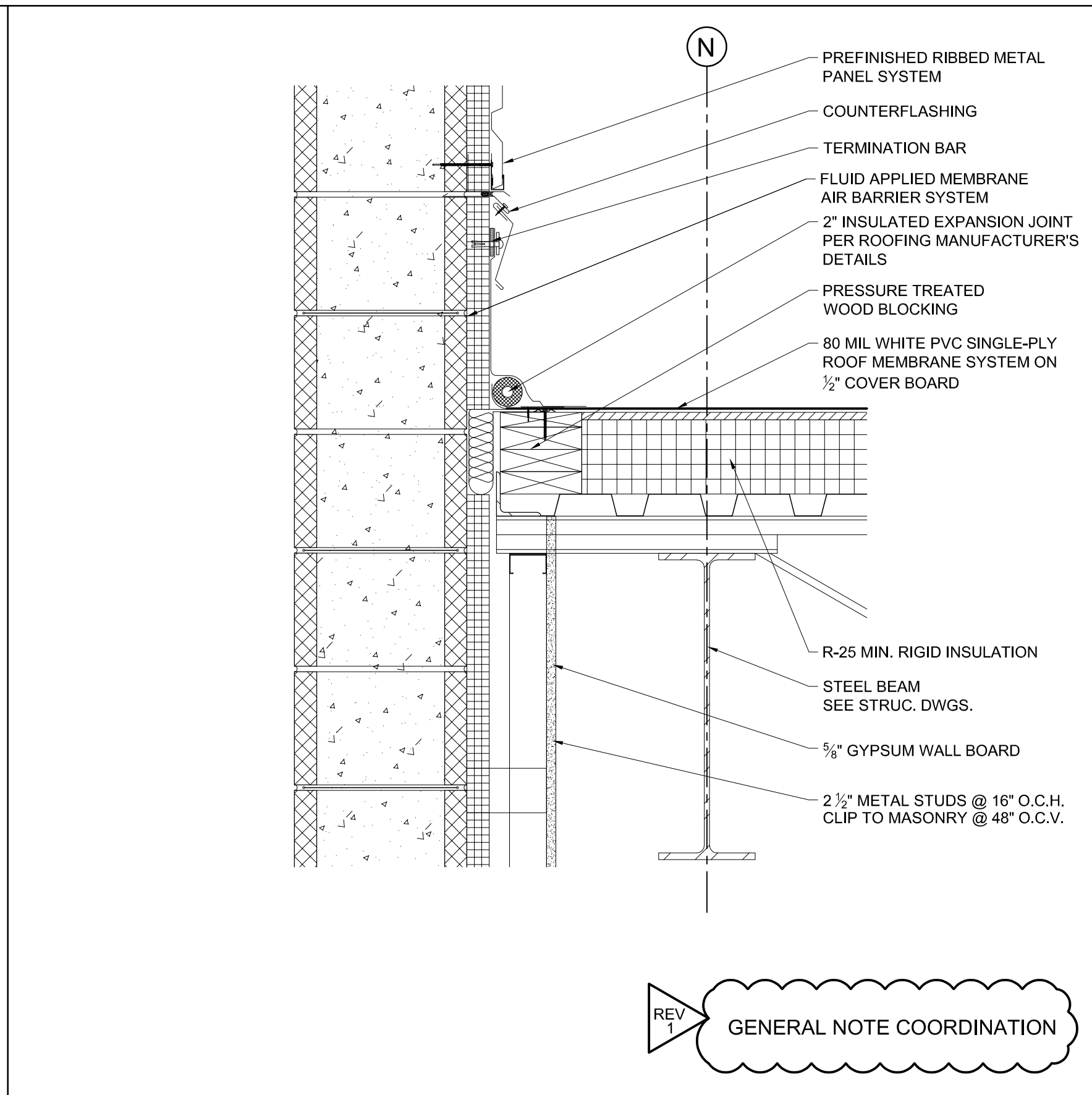
A415



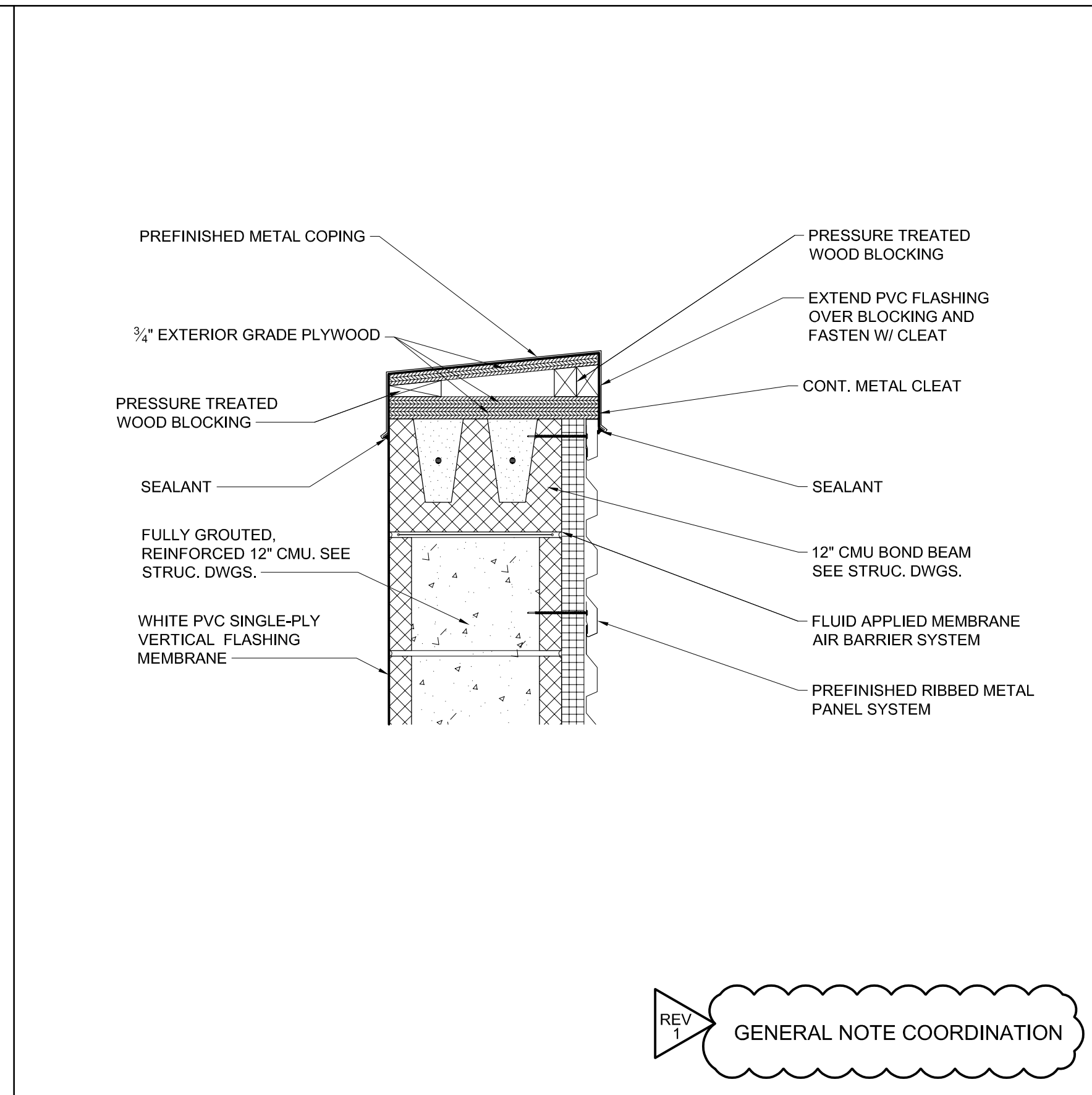
SECTION DETAIL SCALE: 1 1/2" = 1'-0" 12



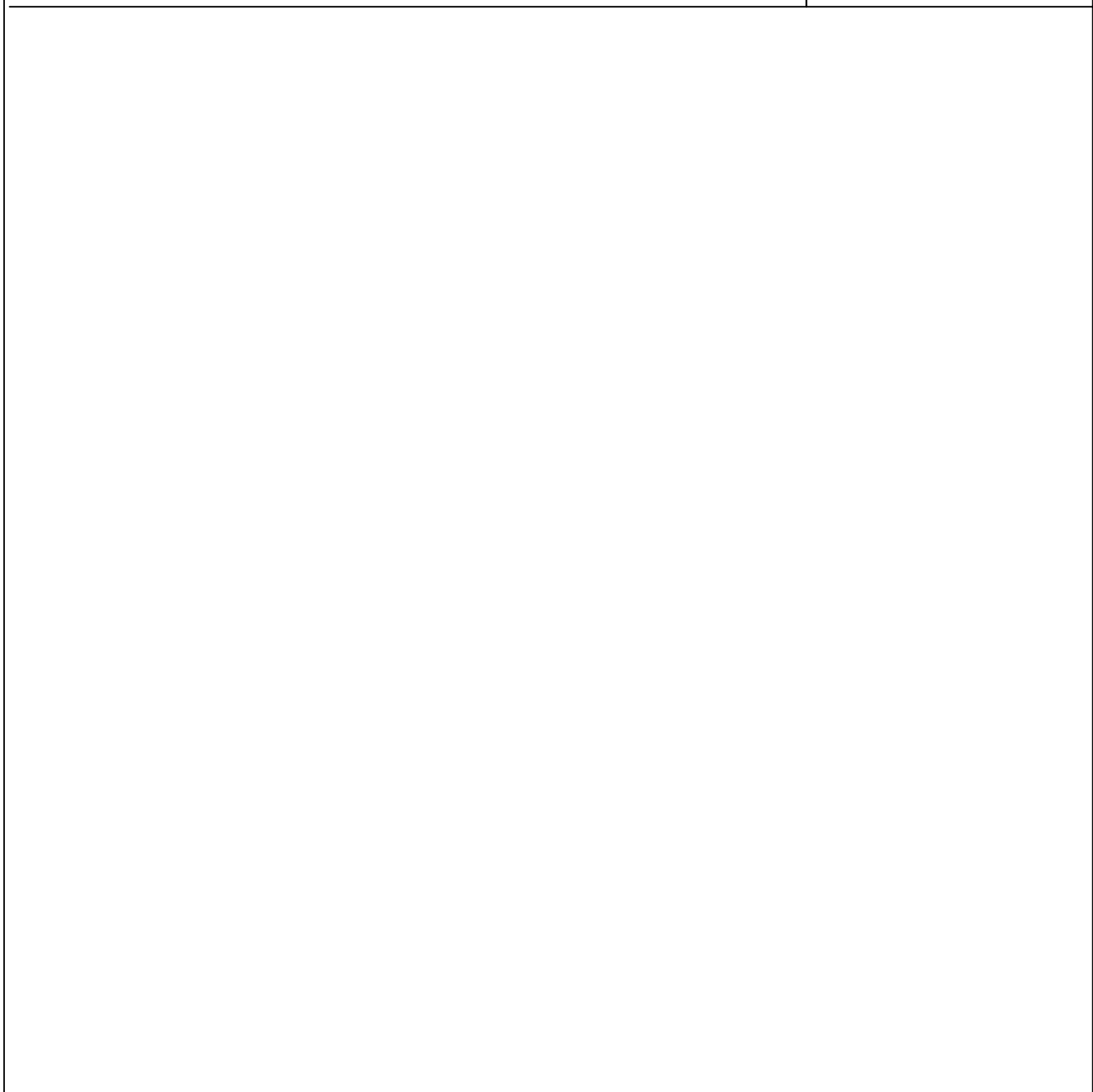
SECTION DETAIL SCALE: 1 1/2" = 1'-0" 09



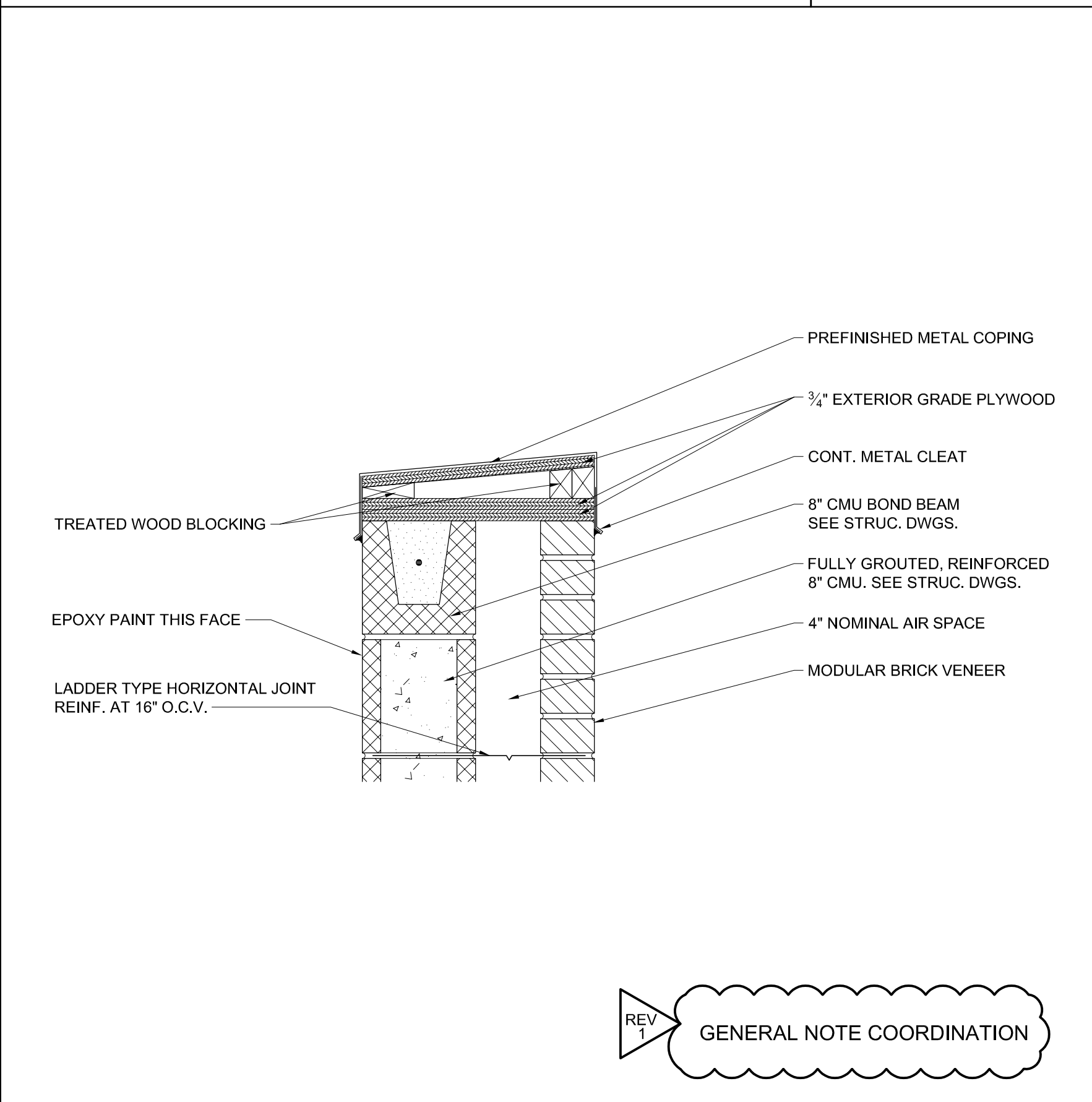
SECTION DETAIL SCALE: 1 1/2" = 1'-0" 06



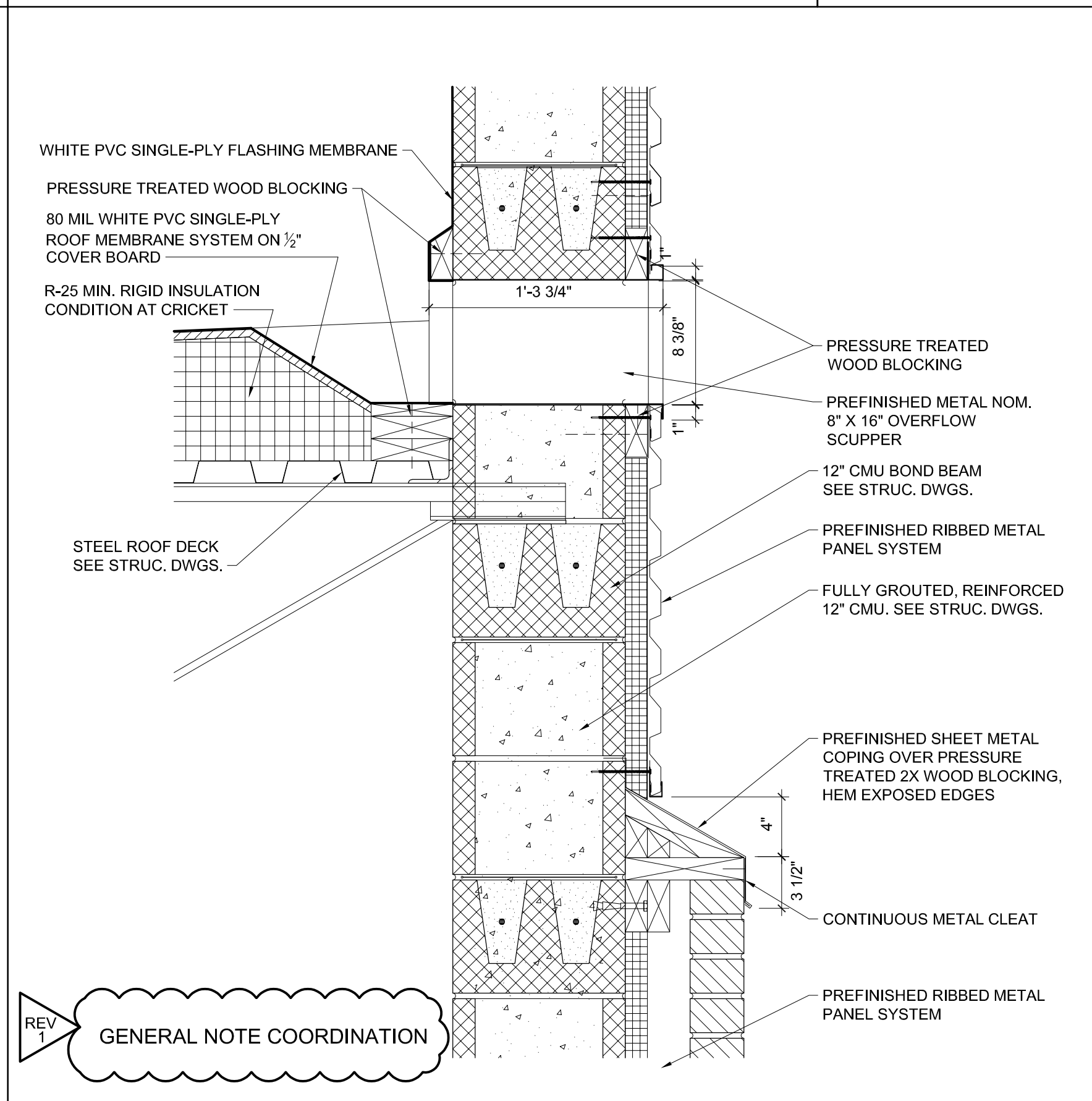
SECTION DETAIL SCALE: 1 1/2" = 1'-0" 03



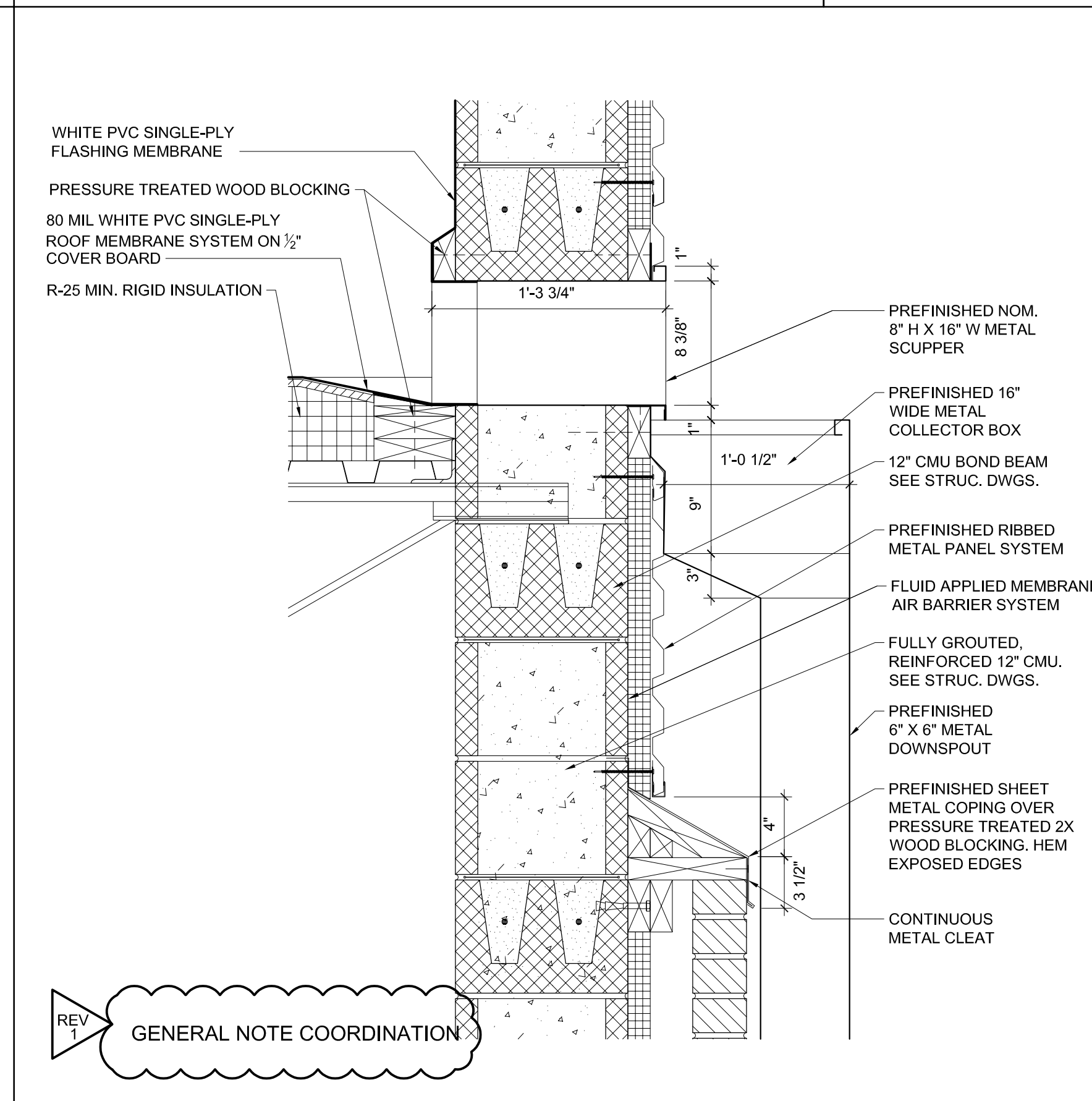
NOT USED SCALE: NTA 11



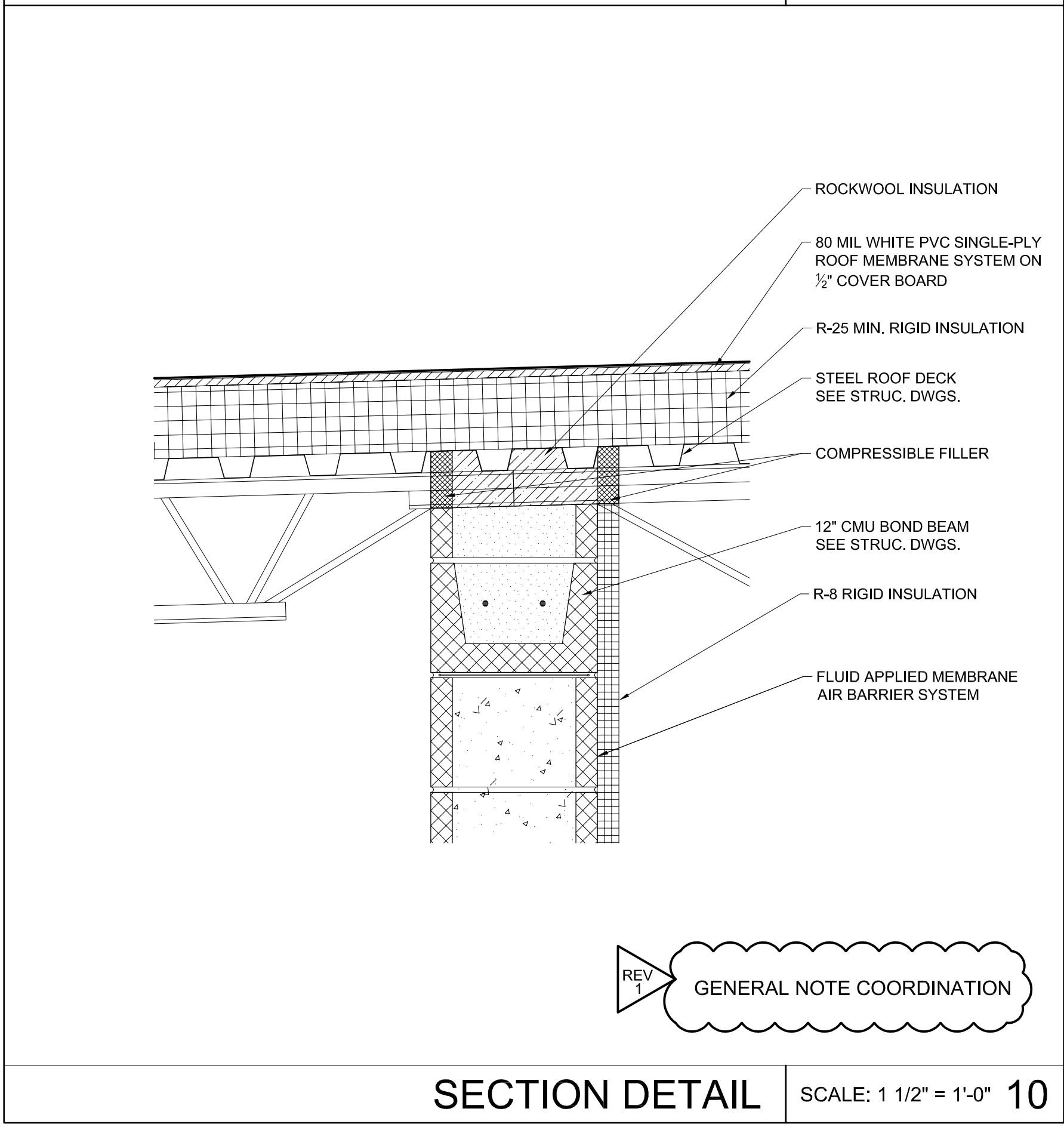
SECTION DETAIL SCALE: 1 1/2" = 1'-0" 08



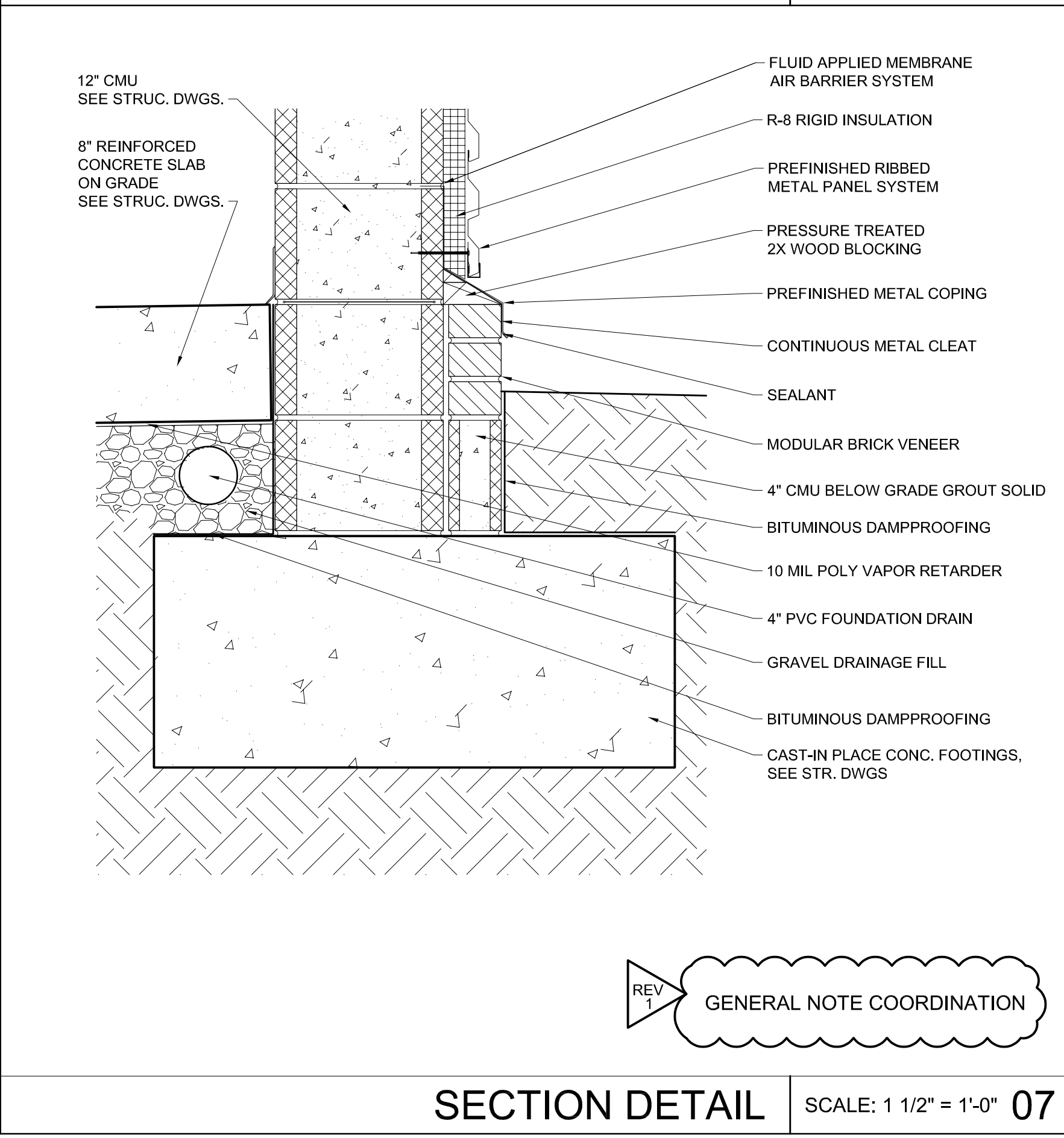
SECTION DETAIL SCALE: 1 1/2" = 1'-0" 05



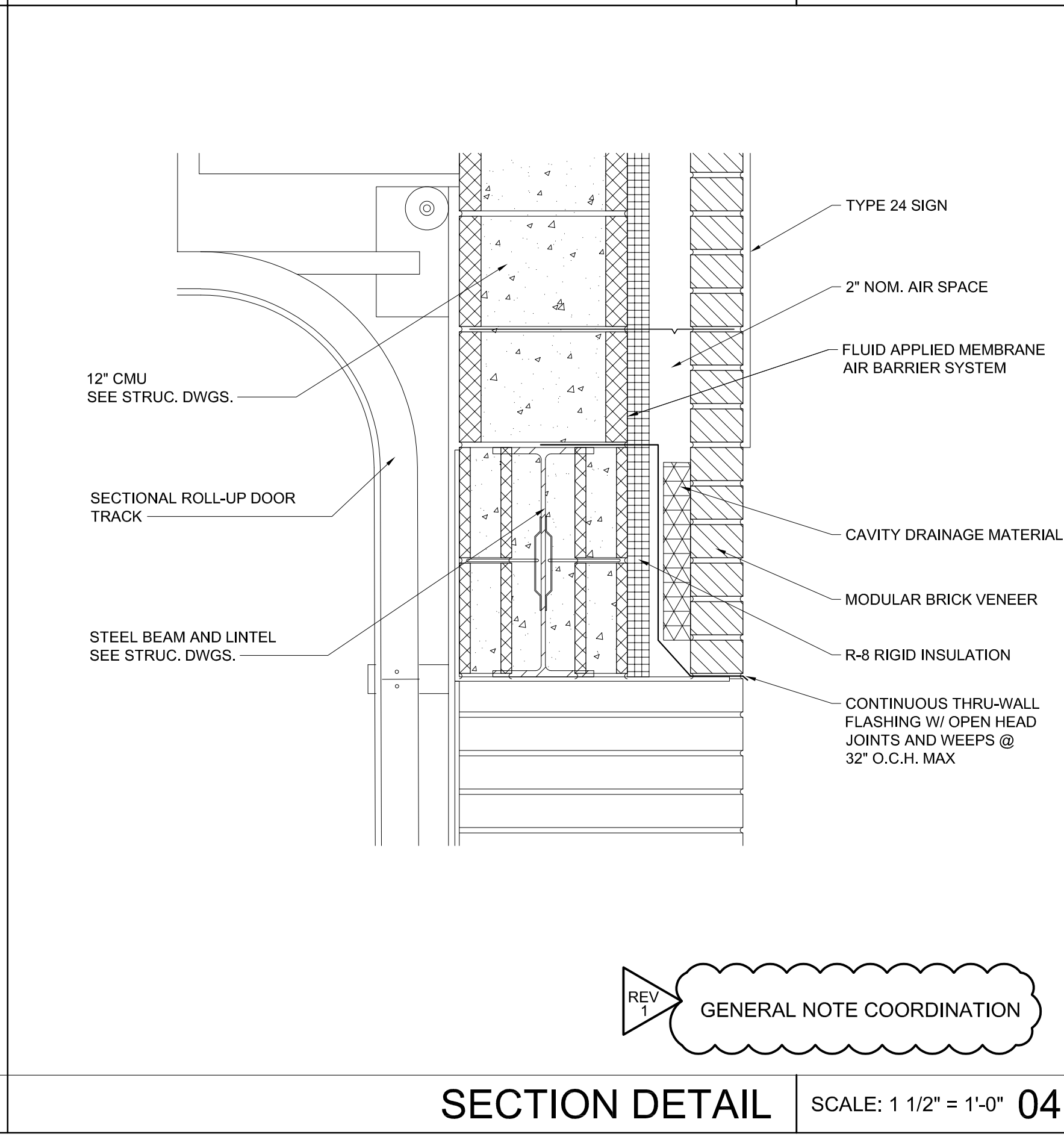
SECTION DETAIL SCALE: 1 1/2" = 1'-0" 02



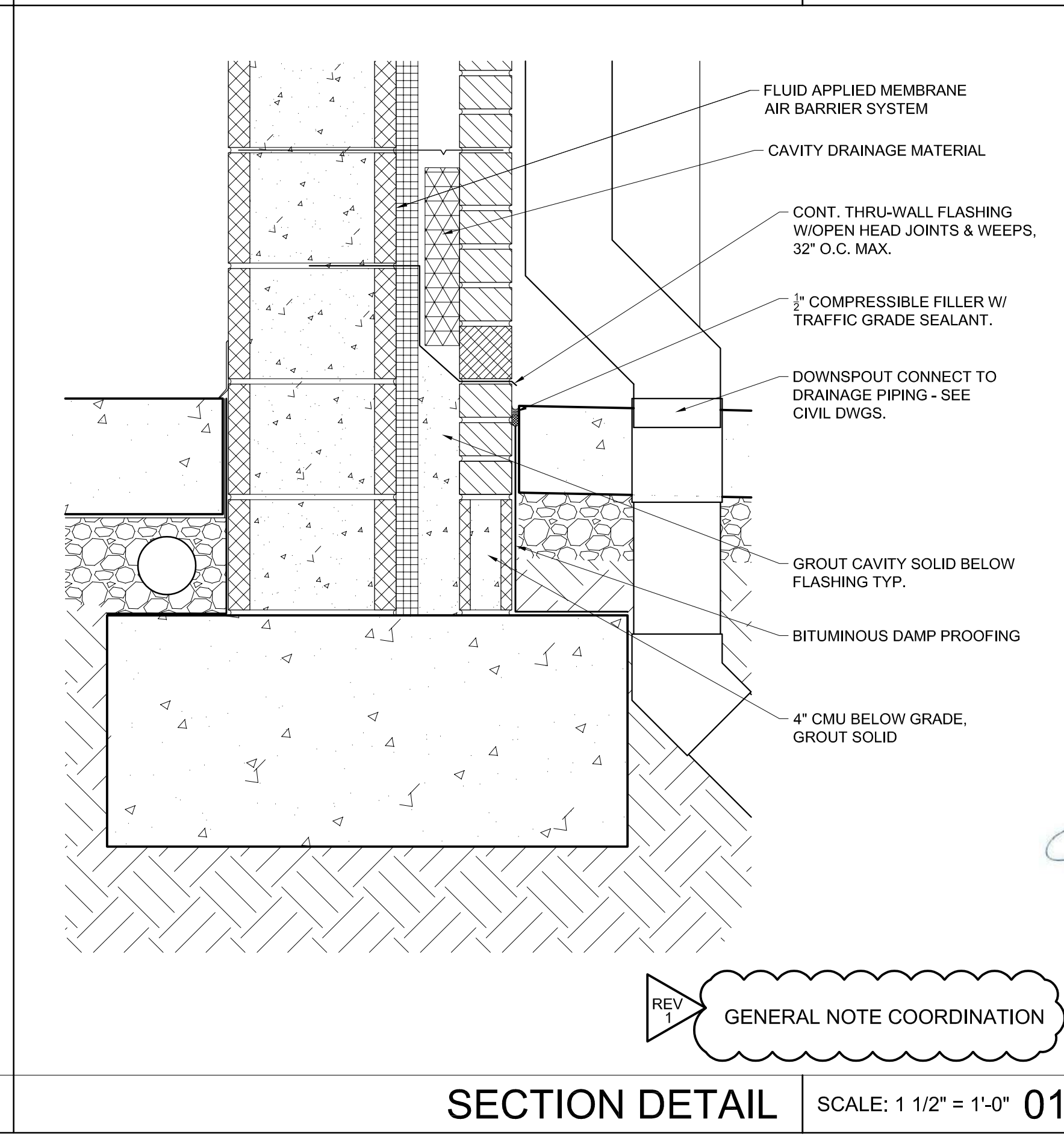
SECTION DETAIL SCALE: 1 1/2" = 1'-0" 10



SECTION DETAIL SCALE: 1 1/2" = 1'-0" 07



SECTION DETAIL SCALE: 1 1/2" = 1'-0" 04



SECTION DETAIL SCALE: 1 1/2" = 1'-0" 01